

FIRST RANK

Editor: Ian Hunnible

A bulletin of the activities of
Wanstead & Woodford Chess Club

To complete the round-up of the season to date, I am starting this issue with a summary of the teams' results not dealt with last time.

Essex League - Division 2

Our record so far is

Played 9 Won 8 Drawn 0 Lost 1

Our tenth match, v. Roding, stands at $3\frac{1}{2}$ - $3\frac{1}{2}$ with one game outstanding which we fear is lost. In this eventuality the likelihood is that we shall surrender our Division 2 title to Upminster (who have lost only to us). The Roding match seems to have been decided on our conceding a default - the first for this team under Howard Anderson's captaincy.

The best performances for the second team this season are by Howard Anderson - $6\frac{1}{2}/8$, Peter Smith - $6\frac{1}{2}/9$ (starting with a run of 5 wins), and George Gooding with $6\frac{1}{2}/10$.

Essex League - Division 3

'A' Team

Played 7 Won 2 Drawn 2 Lost 3

Two other matches remain unfinished where the scores are respectively 3-2 v. Barking and 3-1 v. Laindon

'B' Team - the kiddies

Played 8 Won 3 Drawn 2 Lost 3

This team was lifted out of division 4 which they played in last season because of overcrowding and we were permitted only one team in that division. The boys have done well to establish a 50% record but I feel it was within their capacity to have done even better. They may not have adjusted sufficiently to meet the slightly higher standard in division 3.

The four remaining fixtures include the match against our 3A team whom the boys intend to smash. Only the brave should go near that fixture!

Essex League - Division 4

The record so far

Played 10 Won 5 Drawn 1 Lost 4

Our eleventh match, v. Upminster, stands adjourned at 2-2. This is not quite what it seems because our two points were both won by default.

Now to continue with details of recent events:

Friendly Match v. Hastings

Played Sunday, 12th March, 1978

Several W & W gm players have played against the Hastings club before, as guest players for Ilford, who have had an annual fixture against the seaside club for many, many years, and for the Insurance Chess Club who have a similar long standing association. But for the first time we challenged Hastings ourselves and fielded a 20-board team composed entirely from our own ranks, with no outside help.

Our team was not quite so strong as match-captain-for-the-day Roy Wagstaff had hoped, due to some late withdrawals, but we were still fairly represented.

Wanstead & Woodford			v	Hastings			
1	I.R. Watson	201	½	v	P. Carey	183	½
2	A.T. Marshall	188	1	v	W.A. Winer	182	0
3	F.G.G. Smith	172j	0	v	L.A.J. Glyde	153	1
4	I.D. Hunnoble	174	0	v	G.E. Anslow	160	1
5	A.S. Kinder	152	½	v	E. Houghton	164	½
6	R.A. Wagstaff	158	0	v	P. Donovan	141j	1
7	W.T. Franklin	159	0	v	S. Conquest	130j	1
8	M. Shaw	125j	0	v	B.H. Richards	150	1
9	M. Bird	150	0	v	E.G. Exell	139	1
10	G. Fernie	147	1	v	I. Hardwick	142	0
11	K. Jones	U	0	v	J. Mitchell	137	1
12	T.D. Sanders	Uj	0	v	S. Riorden	134j	1
13	H. Anderson	U	½	v	J.R.F. Jenkins	U	½
14	G. Gooding	137	1	v	B. Ward	129	0
15	D. Ainslie	Uj	1	v	P. James	U	0
16	A.W. Birks	U	0	v	E. Chambers	139	1
17	D.C. Bennett	U	½	v	E. Mitchell	125	½
18	D. Filer	Uj	0	v	J. Pickering	U	1
19	P. Barclay	Uj	1	v	C. Conquest	U	0
20	J. Duggan	Uj	1	v	M. Brown	U	0
			8		12		

Roy Wagstaff comments:

" Board 2 was adjudicated. The Wanstead upper boards were perhaps a little over confident after their Essex League successes of the past season. On boards 6 and 7 the local juniors won well. Anderson was winning until just before time and Barclay's outside passed pawn was sufficient to win in a minor piece ending. John Duggan scored the first win of the match, having seen off his junior opponent in no uncertain fashion."

Roy Wagstaff was on the receiving end of a brilliancy, and, not one to hide his opponents light under a bushel has given me the score. Roy has left me to write what notes I see fit - he always considers his games are self explanatory!

Game 9

Board 6 P. Donovan v. R.A. Wagstaff 1 b3, Nf6; 2 Bb2, g6; 3 e4, d6; 4 g3, e5; 5 Bg2, Bg7; 6 Ne2, O-O; 7 O-O, c6; 8 d4, Qe7; 9 Nbc3, Nbd7; 10 Qd2, exd4; 11 Nxd4, Nc5; 12 Rfe1, Be6; All plain sailing so far. 13 Nd5! Now the horse-play gets a bit too rough for Black's liking. Capturing the knight 13 ... cxd5; 14 exd5, Nxd5; 15 Bxd5 leaves White with a clear advantage. 13 ... Qd7; Now White, having put one piece enprise carries on in the same vein. 14 Nf5!! x cxd5; 14 ... Nxd5; 15 Bxg7 is clearly in White's favour. 14 ... gxf5; 15 Bxf6! cxd5; 16 Qg5, is terminal. But 14 ... Ncxe4; 15 Bxe4, cxd5; 16 Nxc7 transposes to the game. 15 Nxc7, Ncxe4; After-game analysts favoured 15 ... Kxc7 here, but it is not a very inviting line for Black to enter: 16 Bxf6+ Kxf6; 17 Qd4+ Now a) 17 ... Kg5; leads to a forced white win: 18 Qg7! dxe4 (the only reasonable defensive attempt) 19 h4+ Kg4; (if 19 ... Kh5; 20 Qxh7+ Kg4; 21 Qh6, Qe7; 22 Rxe4+! Nxe4 23 Qf4+ Kh5; 24 Bf3+ and mate next move) 20 Qf6, h6; 21 Rxe4+ Kh5; 22 Bf3+ Bg4; 23 Rxc4, Qxc4; 24 Bxc4+ Kxc4; 25 Qf4+ Kh3; 26 h5, g5; 27 Qf5+ g4; 28 Qf6 and mate.

So Black would have to return the piece by (B) 17 ... Ke7; 18 ex^{d5}, when White retains a clear advantage, but Black's game seems playable. 16 Bxe4, Nxe4; Here 16 ... Kxg7 is possible under apparently safer conditions than in the previous note, but the pin on the diagonal is more or less permanent. 17 Rxe4! dxe4; 18 Bf6! Securing the knight's tenuous life-line just as Black was preparing to play ... f6. 18 ... e3; Black's only hope is to clear the white squared diagonals and go for the white king. 19 Qxe3, Bh3; 20 Qh6, Qc6; There is no other way to ward off mate at g7. 21 Qxh3, d5; 22 Qh4, Rfe8; 23 Nf5, Re4; 24 Ne7+ Rxe7; 25 Bxe7, Re8; 26 Re1, Qc3? Chasing the rook off the first rank and thus allowing the white bishop to move without leaving a capture with check. 27 Re2, Qc6; 28 Qh6, Qd7; 29 Bf6, Resigns.

Essex League - Division 1

Played 24th February, 1978

Wanstead & Woodford			v	Southend	
1	R.A. Wagstaff 158	adj	v	A. Downham 185	adj
2	I.R. Watson 201	?	v	J. Moore 161	0
3	A.T. Marshall 188	1/2	v	G. Talbot 171	1/2
4	I.D. Hunnabale 174	1/2	v	J. Speigel 152	1/2
5	P.G. Smith 172j	1	v	M. Twyble 127j	0
6	T.D. Whitton 173	1	v	D. Cannan 156	0
7	A.S. Kinder 152	1/2	v	A. Parsons 150	1/2
8	W.T. Franklin 159	1/2	v	G. Smith 132	1/2
9	G.W. Fernie 147	0	v	P. Blewitt 134	1
10	T.D. Sanders Uj	1	v	R. Gooch 137	0
		<hr/>			
		6 + 1a		3 1/2 + 1a	

Played 22nd March, 1978

Wanstead & Woodford			v	Ilford	
1	R.A. Wagstaff 158	1/2	v	G.M. Hayes 199	1/2
2	I.R. Watson 201	1	v	P.B. Cook 174	0
3	P.T. R. Gasper 192	1	v	J. Roles 154	0
4	A.T. Marshall 188	1/2	v	F. Dorn 153	1/2
5	P.G. Smith 172j	1	v	J. Boden U	0
6	I.D. Hunnabale 174	1	v	A.L. Burnett 148	0
7	T.D. Whitton 173	1/2	v	W. Hawthorn 147	1/2
8	A.S. Kinder 152	1	v	M. Grange 136	0
9	W.T. Franklin 159	1	v	G. Novik 125j	0
10	G.W. Fernie 147	1/2	v	P. Green 128j	1/2
		<hr/>			
		8		2	

The machine rolls on. The Southend fixture I always think is a difficult one - the long journey is not conducive to good chess - but, save for one or two games nearly going astray, we accomplished it successfully.

Our line-up against Ilford may seem rather strong (virtually our strongest) considering the opposition, but they had to be made to pay for putting us out of the cup. Not that we harbour a grudge!

Now for your entertainment, Paul Smith's game from the Upminster match.

Game 10

W & W v. Upminster Board 4 12.12.77 P.G. Smith v. K. Spurgeon 1 e4, g6; 2 d3, Bg7; 3 a3, d6; 4 Bg2, Nf6; 5 Nf3, O-O; 6 O-O, c5; 7 Nbd2, Nc6; 8 a4. An obscure move? Not really, White is preparing a post for his knight at c4 safe from attack by the enemy b-pawn. 8 ... Bd7; 9 Nc4, Qc7; 10 h3, Rb8; 11 Re1, e5; 12 fNd2. "Horses to the rear!" 12 ... b6; as if to commence a Q-side counter by ...a6 and ...b5, (if 12 ... a6 immediately 13 a5 puts on the shackles) but he carries the idea no further. 13 Nb1. An amazing undevelopment. The KN reaches the QN square! The diagonals are cleared and the knight can re-enter the game via c3. 13 ... Be6; 14 Ne3, Qd7; 15 Kh2, Ne7; 16 f4, bxf4; 17 gxf4, d5; Giving up the dark squares in front of his king, but nothing is to be achieved by passive means. 18 e5, Nh5;

19 Ng4, Nf5; 20 Nc3, Qd6; 21 Qf3, Nh4; 22 Qf2, Nxf2; 23 Qxg2, Qh4; 24 Re2, d4;
 25 Ne4, Bd5; A seemingly awkward pin which White treats with utter disdain.
 26 f5; Re8; Of course the pawn cannot be captured: 26 ... gxf5; 27 Ngf6+ and
 Black is routed. 26 ... f6 is also ineffective in the face of 27 Nxf6+.
 27 f6, Bf8; 28 Bd2. The threat of Be1 brooks no answer. 28 ... Rxe5; 29 Be1, Bxe4
 30 Rxe4, Rxe4; If 30 ... Qg5; 31 Rxe5. 31 Bxh4, Resigns.

Essex K.O. Competition

1/2 Final Played 15th February, 1978

Wanstead & Woodford		v	Ilford		
1	I.R. Wateon 201	1	v	W. Hawthorn (Res.) 147	0
2	I.D. Hunnab 174	0	v	P.B. Cook 174	1
3	R.A. Wagstaff 158	0	v	J.R. Cooke	1
4	A.S. Kinder 152	1	v	F. Dorn 153	0
5	M. Bird 150	1/2	v	J. Roles 154	1/2
6	G.W. Fernie 147	0	v	J. Boden U	1
		2 1/2			3 1/2

A lame duck performance. Ian Watson had no trouble with Bill Hawthorn who stepped in as reserve for Gerry Hayes. On the next board I misjudged a move in the centre which lost a pawn on the wing and this proved to be of vital importance. Roy Wagstaff admitted he was outplayed by John Cooke who these days modestly underrates his own ability. Andrew Kinder scored our second full point with a good game with black. George Fernie battled hard to recover from the loss of a pawn, but Boden held on firmly to his advantage in the second session to deliver the k.o.

London League - Division 2

The Wood Green game turned out to be an abysmal 2-8 defeat, but to atone for that we have since again heavily beaten Ilford (about whom we do not harbour a grudge) the final score is expected to be 7 1/2-2 1/2. Full details and games next time.

Our score in this league is now 4 1/2/9 (taking into account the 1/2 pt. lost by default) with the Drunken Knights still to play.

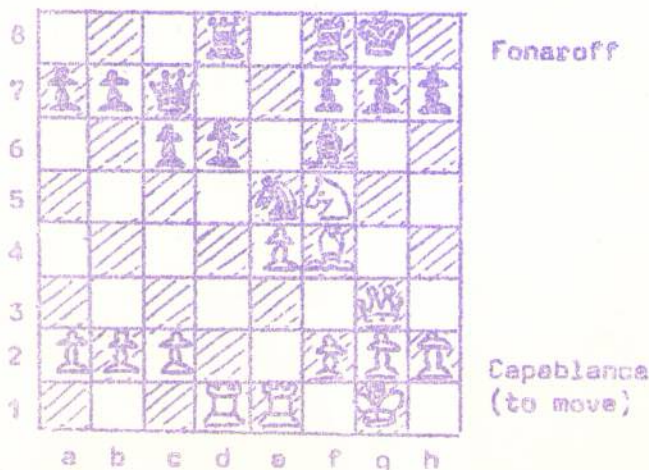
Aggregate Scores - David Wood Trophy

At the time of writing, the leading aggregate scores in matches for the Club are:

A.S. Kinder 14 1/2/24 (L.L. 3 1/2/8; E.L.1 7 1/2/10; E.L.2 2/2; sundries 1 1/2/4)

G.W. Fernie 13/26 (L.L. 4/8; E.L.1 4 1/2/8; E.L.2 3 1/2/7 sundries 1/3)

then come T.D. Whitton 10/18; Peter Smith 9 1/2/12; I.D. Hunnab 9 1/2/21.



White to play and win
 Cepablance's combination is
 six moves deep.
 Answer next time.

Ian Hunnab