

FIRST RANK

Editor
Ian Hunnabale

A bulletin of the activities of
Wanstead & Woodford Chess Club

end Feb. 1980
Vol. 3 No. 5

[illegible]

ESSEX LEAGUE - DIVISION 1

Played 11th January, 1980 at Thorpe Bay
W & W had white on the odd numbered boards

Wanstead & Woodford			v	Southend		
1	Alan J, Potter 158	$\frac{1}{2}$	v	M. Twyble 161 J	$\frac{1}{2}$	
2	P.T.R. Gasper 187	$\frac{1}{2}$	v	J.C. Moore 155	$\frac{1}{2}$	
3	I.D. Hunnable 178	$\frac{1}{2}$	v	A.F. Downham 168	$\frac{1}{2}$	
4	A.T. Marshall 190	1	v	C.T. Cross 155	0	
5	P. Pritchard 171 WECU	0	v	D.G. Cannan 154	1	
6	W.T. Franklin 159	1	v	A.J. Parsons 141	0	
7	T.D. Whitton 167	1	v	N. Sutherland 142	0	
8	A.S. Kinder 164	$\frac{1}{2}$	v	P.J. Blewitt 144	$\frac{1}{2}$	
9	G.W. Fernie 147	$\frac{1}{2}$	v	G.M.A. Smith 132	$\frac{1}{2}$	
10	R.A. Wagstaff 156	1	v	R.T. Gooch 132	0	

In the comfortable surroundings of Southend's new headquarters we successfully completed in one evening the longest trip we have to make in the Essex League.

In the absence of such stalwarts as Messrs. Talbot and Speigel Southend lacked the solidity the seashiders sometimes muster at home and but for the calamity which befell Paul Pritchard there was nothing to threaten our progress in this seasons campaign. The top board game opened as did Alan's against East Ham but our Champion did not get so good a share of the play; some lively counterplay from Twyble kept the balance. Philip Gasper's machine did not appear so well lubricated as in some recent games and Moore developed consistent pressure across a broad front until peace was agreed. Queens disappeared early on board 3 but this was not the sign for a facile draw and a keenly contested middlegame culminated in a timescramble through which both players managed to keep their balance.

Alan Marshall cruised to an advantageous position when his opponent assisted in his own demise by offering the exchange. Paul Pritchard won't thank me for dwelling on his misfortune, suffice is to say that at the end of the session he found an ingenious way to lose his queen when it appeared easier to win! Bill Franklin's opponent seemed determined to give away material and finally succeeded. Andrew Kinder's game can best be described as loose. He shed several pawns without apparent compensation but somehow got a piece for them and went onto the attack. However before the assault could be pressed home Andrew had reached his customary time shortage and had to opt out with a perpetual. On board 10 we had a nice example of Wagstaff's Defence - Roy's well rehearsed system against almost any white opening. After an incursion via K5 with a knight, the President worked a bishop into the queen's side where it proceeded to make a meal of the pawns.

INTERLUDE....space for another quaint quote from "Principles of Chess" by James Mason: "Great skill at Chess cannot at all be attained without some original work. The player must have thoughts of his own, and courage to give them expression; even in the face of authority where that authority is at variance with his own judgement. Practice is, of course, a necessary thing, but it will not make perfect unless it be good practice. A little good is worth a vast deal of the indifferent."

Played 22nd January, 1980 at Wanstead
W & W had black on the odd numbered boards

	Wanstead & Woodford	v	Brentwood	
1	Alan J. Potter 158	adj v	K. Bowden 170 J	adj
2	P.T.R. Gasper 187	adj v	L. Green 168	adj
3	I.D. Hunnable 178	adj v	I. Robson 168 J	adj
4	A.T. Marshall 190	1 v	F.R. Elliott 161	0
5	P. Pritchard 171 WECU	0 v	R. Forey 162	1
6	W.T. Franklin 159	1 v	P. Heath 150	0
7	T.D. Whitton 167	1 v	J. Stock -	0
8	Dr. D.C. Hick 169	0 v	G. Lane -	1
9	A.S. Kinder 164	0 v	W. Coatman 138	1
10	S.R. Lee 138 J	0 v	G. Daniel 126	1
		<hr/>		<hr/>
		3 + 3 adj		4 + 3 adj

Brentwood have made a good start in the Essex League this season and although their line-up did not appear to hold any terrors, we made a determined effort to add to their success.

Quite simply the bottom dropped out. Dave Hick, running a powerful attack, left a piece en prise. Andrew Kinder had the chance for a Greek Gift sacrifice on move 7 (very rare as black), delayed it a move so as to castle, and found that when he played it white had organised a defence by giving back the piece. The upshot of this was that White was better situated and picked up a pawn in the centre. Simon Lee got caught out by a tactical trick in the opening and lost a bishop.

On board 6 Black established a knight on K6 behind White's pawns. Bill however undermined it and the horse had to be put down. Terry Whitton's game featured isolated and doubled pawns on both sides but Terry's pieces gained the important open lines and outposts. Alan Marshall retained a distinct edge despite simplification of the position and winkled the black king into the open where it was gunned down. Paul Pritchard came within an ace of being able to spring a brilliant combination but Forey avoided putting his foot in the trap although he hadn't seen it! After this Paul had the misfortune to commit a positional error in chosing the wrong moment to exchange queens, leaving fatal weaknesses in his pawn structure.

We are claiming wins in the top three games, all for adjudication. Alan Potter meeting a junior top board for the second match in a row, was set upon by a 4 pawns attack during which he surrendered a 8 for 3 pawns. Now Alan is attacking an exposed white king and seems to be winning. Philip Gasper after continuous pressure is a pawn ahead and although he still has to break open Black's tortoise-shell he seems well able to demonstrate a win. Finally Ian Hunnable has an extra pawn in a N & P ending, which after analysis seems to be the easiest win of the three to formulate. See for yourself:

Game No. 58 Board 3 I. Robson v. I.D. Hunnable Alekhine's Defence. 1 e4, Nf6;
2 e5, Nd5; 3 Nc3, One of the less aggressive systems where White
does not "try for too much". 3 ... Nxc3; 4 bxc3, d5; 5 d4, c5; 6 Nf3, Nc6; 7 Be2,
Bf5; 8 O-O, e6; 9 h3, Planning to attack with g4, f4 and f5 but as will be seen
the idea has a flaw. 9 ... c4; With the central pawn block fixed, Black will
play on the Q side against the weaknesses at c2, c3 and a2, whereas White will
follow the counter measure mentioned above. Black will quite happily be able to
castle Q side since White is hard pressed to organise anything significant on the
b-file. 10 Ne1, Qa5; 11 Qd2, 11 Bd2 allows ...Ba3 and a possible ...Bb2 etc.
11 ... h5; Pointing up the fault of White's plan. 12 f4, b5; Contemplating ...b4.
13 g4?! Consequently continuing with his plan in spite of the obvious dangers.
But White can hardly sit back and watch the play develop against his Q side.
13 ... hxc4; 14 hxc4, Be4; 15 Bf3, Bxf3; 16 Rxf3, With the opening up of the h-file
Black can naturally extend operations to the K-side. If the two sides should
meet up... 16 ... O-O-O; 17 a4, Be7; 18 Ba3, Bxa3; 19 Rxa3, Rh4; 20 Rg3, Rdh8;
21 Nf3, Rh1+ 22 Kf2, Now, if Black could transfer his Q to the K-side the white
monarch would topple. But on 22 ... bxa4; intending ...Qb5 and ...Qb1, White plays

moves to reach the time

Hunnable

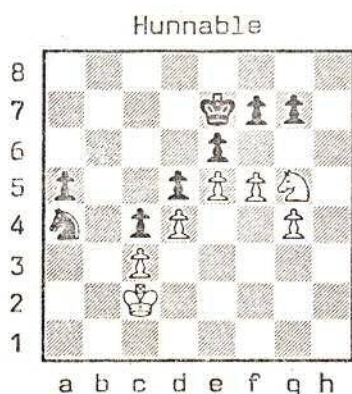
Robson

Black to play

control and adjudication (see diagram). The winning process from the adjourned position is crystalised in analysis by Alan Marshall. The general outline is that the a-pawn is merely a decoy and Black creates a second passed pawn on the K-side: 37 ... exf5; 38 gxf5, g6; White now has two choices: (A) 39 f6+ Kf8; 40 Nh3 (40 Nf3 is little different and 40 e6 fails to 40 ... fxe6; 41 Nxe6+ Kf7 etc.) 40 ... Kg8; 41 Ng5, (if 41 Nf4, Nb6 holds everything and Black can continue with ...g5) 41 ... Nb6; (the knight's tour begins, heading for e6) 42 Kb2, Na8; 43 Ka3, Nc7; 44 Ka4, Ne6; 45 Nf3, g5; 46 Kxa5, g4; 47 Ng1, Kh7; 48 Kb4, (not 48 Kb6, Nxd4!) 48 ... Kg6; 49 Ka3, Kf5; 50 Kb2, Ke4; 51 Kc2, Ke3; 52 Kd1, Kd3; 53 Ne2, g3; 54 Nxb3, Kxc3; 55 Ne2+ Kd3; 56 Ke1, c3 wins.

(B) 39 fxg6, fxg6; 40 Nf3, Nb6; 41 Kb2, (if 41 Ng5 Black gains time on the main line by continuing with 41 ... Na8 heading for e6) 41 ... Ke6; 42 Ka3, Kf5; 43 Nh4+ Kg5;

44 Nf3, Kf4; 45 Nh4, g5; 46 Ng6+ Kf5 47 Ne2+ Ke6 48 Ng6 Kf7 49 Nh8+ Kg7
 50 e6 Nc8 51 Nf7 g4 52 Ng5 g3 53 Nf3 Nb6 with an easy win.



Robson

Black to play

44 Nf3, Kf4; 45 Nh4, g5; 46 Ng6+ Kf5 47 Ne7+ Ke6 48 Ng6 Kf7 49 Nh8+ Kg7
50 e6 Nc8 51 Nf7 g4 52 Ng5 g3 53 Nf3 Nb6 with an easy win.

Played 14th February, 1980 Away
W & W had black on the odd numbered boards

[illegible]

Captain George Fernie was like a dog with two tails over this result, after the trials and tribulations of putting together a team missing six first team regulars. Although Wickford, new to the league, are by no means strong, it says something for our strength in depth that we can pull off a result like this with so many players missing.

Alan Potter must have felt like he was playing in another match, being faced by an opponent at least 50 grading points better than the rest of the side. The board 3 game opened 1 e4, c5 whereupon White thought for 10 minutes! obviously perplexed by the myriad possibilities. At time Paul Pritchard had an extra pawn in a N & P ending and is claiming a win on adjudication. Bill Franklin picked up a pawn in the early stages and, quite out of character, ground out a win in the ending although Julian could have resigned somewhat earlier than he did. Bill now has the impressive record of 6 wins from 6 games in the Essex League. Roy Wagstaff was the only other player (after Potter) not to win (subject to P.P.), but as he put it, "the ulcer took an early draw". George Fernie picked up two exchanges: the first neatly taking advantage of Black's cramped position, the other being an

outright gift. (Game follows.) Stuart Skelsey's game came down to an ending of like bishops and 7 pawns each. Stuart had the infiltration threats and wangled an outside passed pawn which was made to count. Edward Lee attacked with all his K side pawns and had the black king penned up in the corner. Though he eschewed a chance to open up the KR file, which prolonged the game, his handling of the follow-up, patiently probing for weaknesses until he had inched his way into the monarch's cell, illustrated the maturity of his approach to the game. Simon Lee won a piece in the early stages and had only to maintain concentration. On bottom board George Gooding added to his good record on the occasions when he has been called upon for the first team: Black developed a dangerous looking attack but George countered vigorously and found the black king a ready target in the open space behind the advanced K side. The following drastic brevity occurred on board 2. Black commenced an over ambitious plan on the Q side before completing his development and compounded this by playing his queen into trouble. He got what he deserved:

Game No. 59 Board 2 I.D. Hunnable v. K. Bower Queen's Gambit Declined.
1 Nf3, d5; 2 d4, Nf6; 3 c4, e6; 4 Bg5, Nbd7; 5 e3, c6; 6 Nbd2. This was Capablanca's antidote to the Cambridge Springs Defence. One must therefore query Black's next which attempts to employ that defence. 6 ... Qa5; 7 a3, dxc4; 8 Bxc4, b5; 9 Bd3, b4? 10 Nc4, Qd5? But if 10 ... Qc7; 11 Bf4 is very strong. 11 Qc2. Threatening e4. 11 ... c5; 12 e4, Qc6? A thoroughly bad square, but 12 ... Qb7; 13 Bf4, Be7; 14 Bd6, or 13 ... Nb6; 14 Na5, Qd7; 15 Ne5, Qxd4; 16 Nac6, Qd6; 17 Bb5, Bd7; 18 Ng6 are hardly improvements. 13 axb4, cxd4? In any event 13 ... Bb7; 14 Na5, Qc7; 15 Nxb7, Qxb7; 16 bxc5 is also resignable. 14 e5, winning a piece since the N has to be abandoned in order to defend the greater threat of Nd6+ winning the queen. 14 ... Bxb4+ 15 Ke2, Ke7; Incredible! 15 ... O-O is just as bad. The rational continuation, apart from resigns, is 15 ... Bb7; 16 exf6, gxf6; 17 Bd2. 16 Be4, Qb5; 17 Nxd4. 17 Bxa8 immediately is answered by ... Ba6 getting the bishop for the rook. Now however, after 17 ... Qc5; 18 exf6+ Nxf6; 19 Be3 (threat of N check winning the Q) White gets the N and the R (19 ... Qh5+ 20 Bf3). BLACK therefore RESIGNED

And here is the Captain's contribution...

Game No. 60 Board 6 G.W. Fernie v. P. Hickman English Opening. 1 c4, Nf6; 2 Nc3, c5; 3 g3, Nc6; 4 Bg2, d6; 5 Nf3, g6; 6 d4, cxd4; 7 Nxd4, Nxd4; 8 Qxd4, Bg7; 9 O-O, O-O; 10 e4, Nd7; 11 Qd1, Ne5; 12 Qe2, Bd7; 13 Bd2, Rc8; 14 b3, a6; 15 Rac1, Re8; 16 h3, Rc7? 17 Nd5, Rc8; 18 Be3, Rb8; Making a flight square for the queen but, quite remarkably Black loses the exchange. But Black is in quite a corner as the only reasonable alternative shows: 18 ... e6; 19 Bb6, Qg5; 20 h4, Qh5; 21 Qxh5, gxh5; 22 Nf4 winning a pawn with an excellent game (if 22 ... Bh6; 23 Nxh5, Bxc1; 24 Nf6+ etc.). 19 Ba7, Nc6; If 19 ... Ra8; 20 Bb6, Qc8; 21 Nc7 and of course if 19 ... Rc8; 20 Bb6. 20 Bxb8, Qxb8; 21 Rfd1, Bd4; 22 Rd3, e5? 23 Nf6+ Kg7; 24 Nxe8+ Qxe8; 25 Qd2, Bc5, 26 Kh2, Qd8; 27 Rd1, Bb4; 28 Qb2, Qf6; 29 a3, Bc5; 30 b4, Bd4; 31 Qd2, b6; 32 f4, Qe6; 33 b5, axb5; 34 cxb5, Na7; 35 Rxd4! Bxb5; If 35 ... exd4; 36 Qxd4+ Kg8; (or 36 ... Qf6; 37 e5, Qe6; 38 Bd5 followed by e6+ winning the B) 37 Qxb6, Nxb5; 38 a4, Nc3; 39 Rxd6, Qe7; 40 Qd4, winning material. 36 Rxd6, Qc4; whereupon BLACK RESIGNED.

Now going back to the Chadwell Heath match...

Game No. 61 W & W v. Chadwell Heath 5.12.79 Essex Leagu Div. 1 A.T. Marshall v. L.R. Parrott Board 3. 1 e4, g6; 2 Nc3, Bg7; 3 f4, d6; 4 Bc4, a6; 5 a4, c5; 6 d3, Nc6; 7 Nf3, e6; 8 O-O, Nge7; 9 Qe2, O-O; 10 Nd1, Nd4; 11 Nxd4, cxd4; 12 Bh3, Bd7; 13 Bd2, b5; 14 c4, bxc4; 15 Bxc4, Nc6; 16 b4, Qb6; 17 a5, Qb7; 18 Nf2, Na7; 19 f5! A line opening sacrifice typical in such positions. 19 ... exf5; 20 exf5, Bxf5; 21 Rae1, Nc6; 22 Ne4, Rae8; 23 Qf3, Bxe4; 24 Rxe4, Ne5; 25 Rxe5!? This must have come as quite a surprise to Black who was possibly expecting 25 Qf4, Nxc4; 26 Rxe8, Rxe8; 27 dxc4, Be5 with ... Rc8 to follow. 25 ... Qxf3; 26 Rxe8, otherwise the rook goes. 26 ... Qxf1+? A sure sign that he was surprised by White's 25th otherwise he would probably chosen 26 ... Qc6 27 Bxf7+ when it seems a draw is the most that White can play for. 27 Kxf1, Rxe8; 28 Bxa6, Now Black is without defence to the bishop pair and passed pawns. 28 ... Bf6; 29 b5, Rb8; 30 Bf4, Be5; 31 Bd2, d5; sealed 32 b6, Bd6; 33 Bb5, Bc5; 34 Bf4, Resigns.

LONDON LEAGUE - DIVISION 2

Played 1st February, 1980 at St. Bride's
W & W had white on the odd numbered boards

Wanstead & Woodford	v	Mushrooms	
1 Alan J. Potter 158	1 v	DEFAULT	0
2 P.T.R. Gasper 187	0 v	R.M.R. O'Kelly 210	1
3 A.T. Marshall 190	0 v	A.H. Prizant 199	1
4 I.D. Hunnable 178	0 v	M. Prizant 200	1
5 P. Pritchard 171 WECU $\frac{1}{2}$	$\frac{1}{2}$ v	W.A. Linton 195	$\frac{1}{2}$
6 T.D. Whitton 167	1 v	DEFAULT	0
7 DEFAULT	0 v	N.W. Faulks 168 (Res)	1
8 A.S. Kinder 164	0 v	R.J. Roberts -	1
9 R.A. Wagstaff 156	adj v	N.J. Cron -	adj
10 DEFAULT	0 v	F. Lukey -	1

$2\frac{1}{2} + 1$ adj

$6\frac{1}{2} + 1$ adj

These were certainly not edible mushrooms! The grades of their two players who didn't show up are 206 and 190 which meant their top six boards as declared had an average grade of 200, all being over 190 - and this side were relegated from Division 1! There was an air of farce about the start of the match - after 35 minutes play the score was 2-2 (it was nearly 2-1 in our favour except they had a reserve to cover their third non-appearance, on board 7).

Philip Gasper's Benko Benoni malfunctioned and his king ended up where it started from but surrounded by white pieces. Alan Marshall's king never got away from the centre before it was hammered on the central files, finally perishing, after a brief flight, on the K-side. Ian Hunnabell's fate rested on his attempts to free himself from the effects of a backward pawn and/or the hole in front of it; the said attempts were merely instrumental in losing a piece. Paul Pritchard recorded by far the best result to date (the only score over the board!) and was in with a very good shout for a win but finally his minor piece ending was agreed in the pub! Andrew Kinder was doing very well in the early middlegame but congregated his pieces on the wrong side of the board and had no defence when an attack exploded on his king. Roy Wagstaff won a pawn by a far-sighted combination and has carried this advantage to a simple rook and pawn ending for adjudication.

Well now - after our excellent start, this makes four zeros in a row for 2 out of 6. It is now imperative that we make most of the two weaker sides we still have to meet, Wibleton II and Ilford. Ilford are struggling badly and this may mean we have to put the nail in their coffin if we are to stay up. That we should be brought to such straits with what is the strongest London League side we have had for some seasons is indeed a paradox.

With the next game, from the East Ham match, the suspicious reader would think I had got my hands on Alan Marshall's score book. He'd be right.

Game No. 62 W & W v. East Ham London League Div. 2 12.12.79 Board 3 A.T. Marshall v. K. Warren. Vienna Game. 1 e4, e5; 2 Nc3, Nf6; 3 f4, d5; 4 fxe5, Nxe4; 5 d3, Nxc3; 5 ... Qh4+ 6 g3, Nxc3; 7 Nf3, Qh5; 8 Nxd5, is a well known trap. 6 bxc3, Nc6; 7 Nf3, Bg4; 8 d4, Be7; 9 Bd3, Bh4+ 10 g3, Be7; 11 h3, Be6; 12 Qe2, Qd7; 13 Qg2, f6; 14 exf6, Bxf6; 15 Bg5, Qe7?! 16 Bxf6, Qxf6; 17 0-0, Qh6; 18 Rae1, 0-0; 19 Kh2, Rae8? 20 h4, Kh8; 21 Ng5, Bg8; 22 Bxh7! Based on overloading the black position with threats of forking at f7 e.g. 22 ... Bxh7; 23 Rxe8 etc. And 22 ... Rxe1; 23 Rxf8 etc. 22 ... Qd6; 23 Rxe8, Rxe8; 24 Bxc8, Kxc8; 25 Qf3, Rf8; 26 Qxf8+ Qxf8; 27 Rxf8+ Kxf8; 28 Ne6+ Kf7; 29 Nxc7, Ne7; 30 g4, a6; 31 Kg3, g6; 32 Kf4, Kf6; 33 a4, Kf7; 34 Ke5, Ng8; 35 Nd5, Resigns.

Ian Hunsb G