

"Ilford Recorder" 12/10744

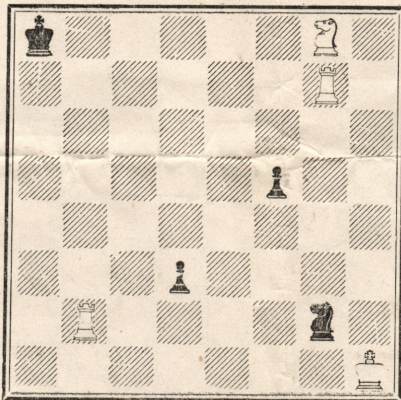
CHESS

ILFORD N.F.S. REACH LONDON FINAL

(By T. H. GEORGE)

Problem No. 598, by D. E. Love.
Wanstead.

BLACK (4 pieces)



WHITE (4 pieces).

(k 5 N 1; 6 R 1; 8; 5 p 2; 8; 3 p 4; 1 R 4 n 1; 7 K).

White mates in three. Scissors pattern.

SOLUTION TO PROBLEM No. 597, by C. H. Hatheway (3 N b k 2; 8; 5 K 2; 8; 8; 1 B 6; 8; 8), white 3. black 2. 1. B-Q 5, B-Q 2; 2. B-B 7, B-B 1; 3. N-B 6, B-R 6; 4. N-K 5 wins. If 1... B-R 4, then 2. N-K 6 ch. K-K 1; 3. N-N 7 ch. wins. Or 1... B-N 4; 2. N-K 6 ch. K-N 1; 3. N-B 7 ch. wins. Or 1... B-R 5; 2. N-K 6 ch. K-K 1; 3. B-K 4 wins. The control of the black bishop is a piece of perfect scheming.

ESSEX TOURNEYS (Major and Minor). Last day of entry October 14th. Entrance fee, 2s., to A. T. Kent, 429, Aldborough-road, Ilford.

EAST HAM CLUB now meets at Barclay Hall, Green - street, Upton Park (Romford-road end), Fridays, 7-10. Secretary, H. Harvey, 14, Sussex-road, East Ham, E.6.

Wanstead "Pipped"

Ilford and Wanstead opened the winter season with a friendly encounter at Ilford. Both clubs were below full strength. Ilford took an early lead at boards 6 and 7, Wanstead retaliated at board 4, but Ilford scored again at board 3. Wanstead fought back, J. Mason winning a lively game at board 1, but R. E. Rankin made Ilford safe. Boards 2 and 5 were fair draws.

FOUR KNIGHTS' GAME.

White: Dr. Crook.
Black: J. Mason.

White.	Black.	White.	Black.
P-K4	P-K4	B-N3	N-N5
N-QB3	N-KB3	Q-Q2	P-K5
N-B3	N-B3	P-R3	PxN
B-N5	B-N5	PxN	PxP
Castles	Castles	P-B3	N-R5
P-QR3	BxN	Q-B2	P-KN4
(a)		BxP (d)	BxB
QPxB	P-Q3	RxB	Q-B3
Q-Q3	N-K2	R-Q3	P-B4!
B-N5	N-N3	R-K7	PxP
QR-Q1	P-KR3	Q-Q4	N-B4
B-B1	P-K3	Q-K5	NxB
KR-K1	P-B3	QxN (e)	PxP
B-B4	P-Q4	B-K3	QR-K1
PxP	PxP	Q-N4	RxB
Q-K3 (b)	Q-B2	Resigns	

(a) Practice has proved P-Q3 more reliable. (b) White's difficulties deepen. Better chances were by Q-K2, and if B-N5, then 16. P-KR3, etc. Or 15. P-K5; 16. N-Q4, B-N5; 17. P-B3, PxP; 18. NxB, Q-N3 ch. (N-R5); 19. B-K3. (c) There is nothing better. (d) Dr. Crook later suggested P-KB4, leading (after BxP) to terrific complications. (e) If R-Q6, PxP is good enough.

Finalists

Beating Hendon in the semi-final, Ilford reach the London Fire Force final for the second time in three years. They were first winners of the trophy in 1942. The other semi-final may have been decided when these notes appear.

Ilford N.F.S.	Hendon N.F.S.
A. T. Kent ... 1/2	B. Caras ... 1/2
S. T. Harvey 1	A. E. Markey 0
A. Curtis ... 1	C. Steel ... 0
L. Cundle ... 0	W. Walsingham 1
W. Steadman 1	H. Larkin ... 0
E. Stacey ... 1	A. Hulbert ... 0
	4 1/2
	4 1/2

"Chess" announces definite formation of Postal League Clubs as far apart as Edinburgh and Watford have entered. Ilford hope to join. Trophies are being provided and members of winning teams receive medals.

ILFORD. WANSTEAD & WOODFORD.

Dr. A. Crook 0	J. Mason ... 1
H. M. Cleare 1/2	D. E. Love ... 1/2
D. W. Chopping 1	J. F. Styles ... 0
J. G. Hayes 0	T. G. Cocking 1
G. F. Winstone 1/2	R. A. Wagstaff 1/2
E. F. Norris 1	Rev. H. Pike 0
C. Saltwell ... 1	T. A. Stickland 0
R. E. Rankin 1	E. E. Okey ... 0
	5
	3

Here is the game played at board 1—bright and fast chess (inside two hours). This is the first match game that remarkable veteran, Dr. Crook, has lost since joining Ilford.