

Socially distanced Junior Coaching Chess Club

Instructions for junior players, parents and guardians effective from 14th September 2020

Booking your place



Access to Wanstead House is for booked users only. It is not open to the general public.

Numbers are restricted for all groups and in all rooms to facilitate social distancing. Our club room (Roding) has a limit of 18 persons so we can accommodate the maximum permitted number of 15 children within anyone group.

For sessions after 15 September, registration will be online through the club's website with the termly fee of £25 payable by bank transfer if possible. This is part of our Track & Trace.

You will also be able to specify arrival and departure times, pick up arrangements and on the day contact numbers.

Please note that Wanstead House does not permit waiting in the House for more than a few minutes in order to control numbers and facilitate safe movement in an old building.

Come prepared

Read the House Rules – Keeping Wanstead House safe and follow the rules

Read now to play Two-boarded Chess. This also includes social distancing and safety protocols on entry to, exit from and when moving around the club room.

If your child is displaying Covid-19 symptoms or have other symptoms that carry a risk of coughing or sneezing (e.g. flu or cold like symptoms) **do not attend**.

If your child has a medical condition such that they are exempted from wearing a face covering you must assess whether social distancing that is less than 2m represents a danger to their health or to others (as some respiratory conditions might well do). Take medical advice. You must notify us of any such medical exemption. It may or may not be possible to make adjustments to accommodate your child in a way which is safe for you and for others.

All persons over the age of 11 must wear a face covering in the House (and Hall) at all times (unless a medical exemption applies) and this includes our Club's playing rooms. This may take the form of a visor or nose and mouth covering or both. For those who use spectacles use a visor or a face mask with a top metal strip to prevent steaming.

We have extended this to include all Key Stage 3 & 4 secondary school children (aged 11 and over) so that we have one set of rules applicable to all within this age group bubble. Different arrangements will apply should we offer junior coaching to younger children. When we have a classroom set-up

involving discussion face coverings maybe removed as greater distancing will be possible to accommodate this as there is in schools.

The Club is providing sanitiser for hand cleansing; mandatory on entry and exit to Wanstead House and on entering the Club room. Children are welcome to bring their own, but will be supervised.

Each player will use a single board and set for the duration of the session. You are welcome to bring your own set and board.

Bring your own pen or pencil in case this is needed.

Do not arrive too early. If you do you must wait outside the building maintaining social distance. Access to the downstairs lounge/back lounge will be possible from 4:50pm where your child must wait, wearing a face covering and maintaining social distancing, until the playing room is ready. There is no seating in these areas save for reserved separated chairs for those unable to stand. It may be possible to accommodate earlier arrivals by prior arrangement with the Safeguarding Team.

In winter, bring a thick jumper as some windows are likely to be open for ventilation.

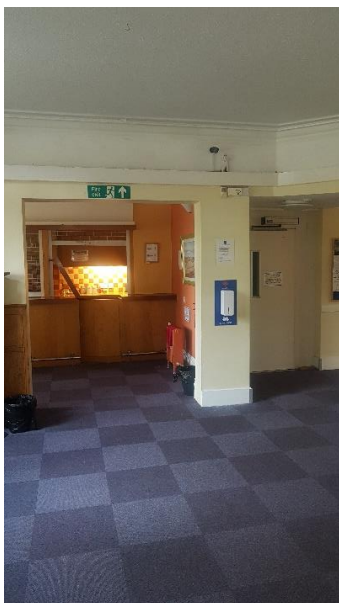
Have collection arrangements (where applicable) thought out in advance. You can use the further information box on the registration form to provide the session supervisors with more information about this.

Car-parking, drop-off and collection

Be conscious of those around you before getting in and out of vehicles. Register your car if you are intending to use the car park at Wanstead House.

Playing room preparation

The room needs to be set-up for socially distanced chess and appropriate cleansing measures put in place before your child can gain access to the playing room. They must wait, wearing a face covering and maintain social distancing, downstairs in the lounge/back lounge until 5pm or invited up to allow for this to take place safely. The room needs to be prepared for social distancing and equipment put out in a sterile environment for everyone's safety.



Movement in Wanstead House

- Before entering the House put on your face covering.
- Sanitise on the way into the House.
- Do not loiter in the entrance lobby outside the Office.
- Move straight away to the lounge/back lounge until the playing room is ready.

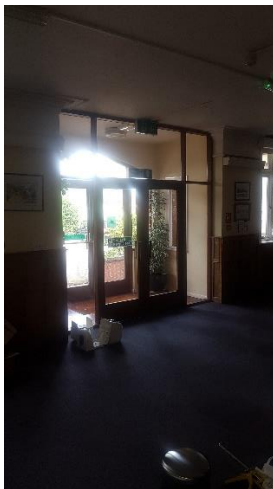


- Use the lounge/back-lounge to wait until 5:00pm or invited upstairs.
- Give way to those leaving the building or coming down the stairs. The lounge is a dedicated space to wait until the stairs are clear.
- You can sanitise on reaching the upper level should you wish.

• **Do not mix with other groups in the House**

• **Always keep a distance of at least 1 metre**

- Use your common sense at all times and respect others.



- You **MUST** sanitise on entry to the playing room
- Sanitise before using the toilets or the café facilities (if available) and after use.
- You **MUST** sanitise on your way out of the playing room.
- Sanitise on leaving the building.
- At busy times you may need to exit through the lounge double doors to avoid congestion at the House entrance and the access from the car park. Use the patio area to wait if you are leaving the House against the flow of incoming users. Staggering of arrival and leaving times is in place to minimise this.

Club Rules

Follow the instructions of the supervisors and Wanstead House staff at all times.



On entry to the playing room you **MUST**

- Sanitise,
- collect your board and set (if you have not brought your own)

You may be allocated to a playing or working group within a zone. If so, you must keep within the zone and not mix with anyone from another group during the session.

Maintain a social distance of at least 1m at all times, keeping movement in the playing room to a minimum and be conscious of others.

If you need to leave your table raise your hand so that the supervisors can make sure your path is clear



Clocks

These can only be set by a supervisor and will be sanitised **before every game**.

Only the player with the white pieces may start or pause the clock and should pause the clock when requested by an opponent or supervisor.

Only press your side of the see-saw bar.

Notify a supervisor when your game is **finished** for the clock to be reset and cleaned or if you **accidentally touch** your opponent's side of the see-saw bar so that it can be cleaned.

Government guidance

Parents and guardians are referred to the latest government guidance for children's attendance at out-of-school settings which can be viewed [here](#). It has not been affected by the changes to social gatherings that come into effect on 14th September limiting social gatherings to 6 persons.

Wear your face covering at all times unless there is a classroom set up discussion. You will be told when this is permissible.

Single board chess is not permitted.

Two boards (one for each player) must be used for any one game at all times.

Use the same board and set for the duration of the session.

Return captured pieces to their box.

If you are told to change table, complete the packing of the set in its box and take your board and boxed set to the vacant table position, where it can be set up again for use by you only.

Do not move the clock. A supervisor will remove this and replace it for you.

Club equipment that you have finished with, place under a playing table out of the way if a receptacle is not available. Do not leave it on the table.