

Socially distanced Wanstead & Woodford Chess Club (2nd edition)

Instructions for members **effective from 14th September 2020** until further notice (1 metre +)

Booking your place



Access to Wanstead House is for booked users only. Numbers are restricted for all groups and in all rooms to facilitate social distancing. Our club room (Roding) can accommodate a maximum of 18 players.

If we have sufficient notice of intended numbers an additional room booking can be made to accommodate more, but prior notice is essential.

Remember that the House may need to close at short notice should there be a localised covid-19 infection outbreak and the club needs to be able to contact those attending. This will also assist with track and trace.

Help us to make the Club as accessible as possible by advance booking. Book online or by telephone to avoid disappointment.

Pay your board fee by bank transfer if you can.

Come prepared

Read the House Rules – Keeping Wanstead House safe and follow the rules

Read the ECF Tournament Rules about playing chess on two boards. These are analogous to those for playing a blind player, which our members should be familiar with. The Club has a local variation to these rules to provide for use of a single clock. The room layout has been designed to ensure that the clock faces are visible to both players.

If you are displaying Covid-19 symptoms or have other symptoms that carry a risk of coughing or sneezing (e.g. flu or cold like symptoms) **do not attend**.

If you have a medical condition such that you are exempted from wearing a face covering you must assess whether social distancing that is less than 2m represents a danger to your health or to others (as some respiratory conditions might well do). Take medical advice. You must notify the Club of any such medical exemption. It may or may not be possible to make adjustments to accommodate you in a way which is safe for you and for others.

You must wear a face covering in the House (and Hall) at all times (unless you have a medical exemption) and this includes our Club's playing rooms. Without this the club cannot meet as it is impossible within our playing rooms to maintain a 2m separation or to sensibly play chess at that distance in the room space. This may take the form of a visor or nose and mouth covering or both. For those who use spectacles use a visor or a face mask with a top metal strip to prevent steaming.

The Club is providing sanitiser for hand cleansing on entry and exit but you are welcome to bring your own.

Each player will use a single board and set for the duration of the evening. You are welcome to bring your own set and board.

Bring your own pen or pencil to sign in with. Track and trace is a necessary part of social distancing indoors. It is a mandatory condition of our room hire at Wanstead House.

Do not arrive too early. If you do you must wait outside the building maintaining social distance. Access to the downstairs lounge/back lounge will be possible from 7:20pm where you must wait, wearing your face covering and maintaining social distancing, until the playing room is ready. There is no seating in these areas save for reserved separated chairs for those unable to stand.

In winter, bring a thick jumper as some windows are likely to be open for ventilation.

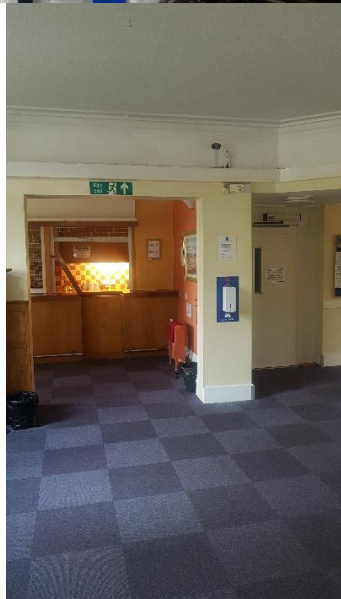
Have your collection arrangements (if applicable) thought out in advance.

Car-parking, drop-off and collection

Be conscious of those around you before getting in and out of vehicles. Register your car if parked.

Playing room preparation

The room needs to be set-up for socially distanced chess and appropriate cleansing measures put in place before you can gain access to the playing room. You must wait, wearing your face covering and maintaining social distancing, downstairs in the lounge/back lounge until 7:30pm to allow for this to take place safely. The room needs to be prepared for social distancing and equipment put out in a sterile environment for your safety.



Movement in Wanstead House

- Use your common sense at all times and respect others.
- Maintain at least 1 metre's distance at all times.
- Before entering the House put on your face covering.
- Sanitise on the way into the House.
- Do not loiter in the entrance lobby outside the Office. The Office is a place of work and staff must be protected. The House will close if there is insufficient staff.
- Move straight away to the lounge/back lounge until the playing room is ready.
- Use the lounge/back-lounge to wait until 7:30pm.
- Give way to those leaving the building or coming down the stairs. The lounge is a dedicated space to wait until the stairs are clear.



- You can sanitise on reaching the upper level should you wish.

• **Do not** mix with other groups in the House

- You **MUST** sanitise on entry to the playing room.



- You **MUST** sanitise on your way out of the playing room.
- Sanitise before using the toilets or the café facilities (if available) and after use.
- Sanitise on leaving the building.
- At busy times you may need to exit through the lounge double doors to avoid congestion at the House entrance and the access from the car park. Use the patio area to wait if you are leaving the House against the flow of incoming users. Staggering of arrival and leaving times is in place to minimise this.

Club Rules

These are mandatory and not negotiable.

Failure to comply with them or the House rules for the common parts means the Club's hire will be terminated. They exist for the safety of all. Without them we cannot have an indoor social gathering.

Do not mix with other groups in the House. Do not mix outside of your club night "6" (see below).

Do not enter the playing rooms without a face covering, which must be worn at all times.

Use your common sense. Follow the instructions of the club steward at all times.



On entry to the playing room you **MUST**

- Sanitise,
- sign in and
- collect your board and set (if you have not brought your own)

You will be allocated a playing zone for a maximum of 6. You **MUST NOT mix with anyone outside of your 6 while at the Club.**

The equipment supplied by the Club will not have been used for 7 days so will not be contaminated.

Maintain social distance of at least 1m at all times, keeping movement in the playing room to a minimum and be conscious of others.



If you wish to change opponent **within your zone**, remain seated until a vacancy appears. **KEEP OUT of other zones during the session.**

Use a single board and set for the duration of the evening.

Return captured pieces to their box.

After setting a clock sanitise it using the supplied sanitised cloth or wipes and place on your table without touching the see-saw bar. Sanitise your hands.

If you accidentally touch your opponent's side of the see-saw bar, stop the clock and sanitise it and your hands.

If you change your playing table, complete the packing of the set in its box and take your board and boxed set to the vacant table position, where it can be set up again for use by you only. You will be able to sanitise the playing table too, should you wish.

Club equipment that you have finished with, place under a playing table out of the way if a receptacle is not available. Do not leave it on the table. It will be collected at the end of the session.

Single board chess is not permitted.

Two boards (one for each player) must be used for any one game at all times.

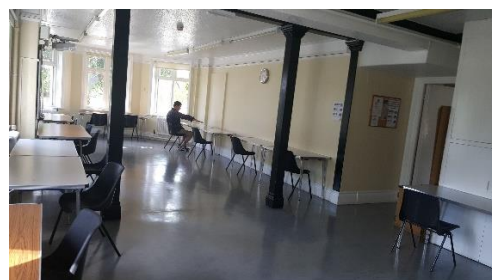


Room lay-outs

Face to Face – 2 board social play



Side by Side – 2 board competition play



For most club nights a choice of playing table will be available. Side by side is best suited to slow play and the c2m face to face for speed chess where sight of the opponent's board is beneficial. 10/9/2020